

TrueFRESH™

Ventilation Just Got A Whole Lot Easier

Simplify Installation With TrueFRESH™



New York Tennis Club Indoors

Supplemental Lobby Protection Proposal To The

NYTCi COVID-19 GUIDELINES: 2020-2021

09.25.2020

Introduction	3
Proposed PDM Group Solution	3
PDM Group Install	3
Function	4
Extra Purchase To Filter Covid In The Lobby	5
Conclusion	5

Introduction

New York Tennis Club Indoors issued a safety document entitled COVID-19 GUIDELINES: 2020-2021 SEASON earlier in September of 2020, to last year's Teaching Pros, Game Arrangers and Seasonal court holders, who are returning this coming season (Oct 17th, 2020 to May 1, 2021). That document satisfies completely New York State's requirements to operate a sports facility safely. In addition, New York Tennis Club Indoors will be providing supplemental protection in the lobby, by implementing a combined system that exchanges and filters fresh air.

PDM Group is a certified HVAC company, located at 1258 South River Road Cranbury, NJ 08512 609-655-8880 (HVACR License #19HC00127100). PDM Group works with many different tennis facilities around the greater Metro, NJ and CT regions, including NYTCI. NYTCI contacted PDM Group to source a solution for NYTCI's lobby and front desk area, in order to get expert direction on what would improve safety in that area.

Proposed PDM Group Solution

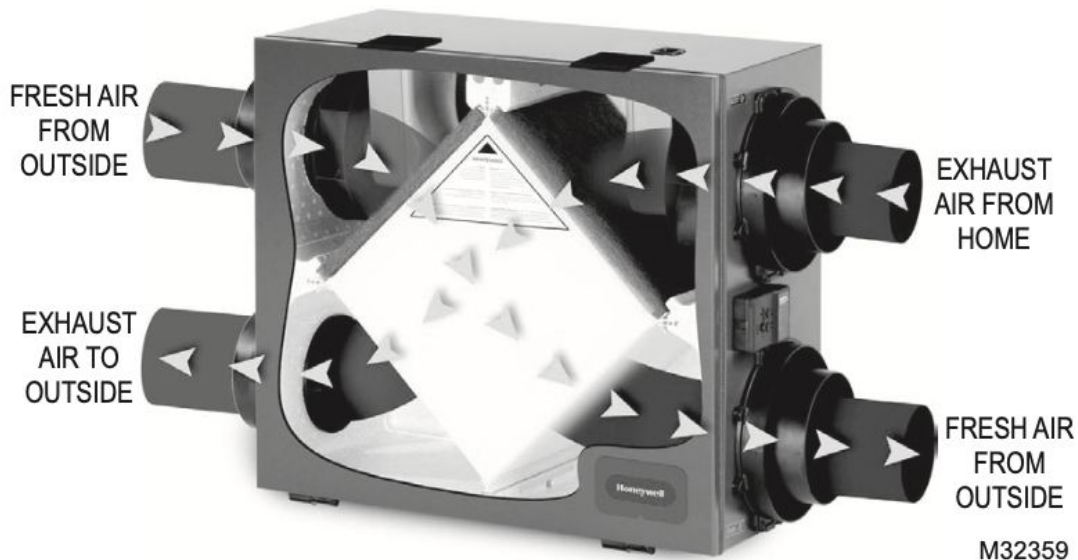
PDM Group Install

Per NYTCI's request, the solution must not be permanent, so that when the winter club turns over to the summer club in May 2021, it may be removed. The installation will not be 'pretty'. It is meant to be safe and functional.

PDM Group will install a 150 Cubic Feet Per Minute (CFM) Honeywell TrueFRESH Heat Recovery Ventilator for clubhouse at New York Tennis Club Indoors, Throgs Neck NY. Suspend from ceiling in space. Run Flex Line to the center of the room and/or window to discharge air. Run Power cord to Nearest outlet and plug in. Open the nearest window. Cut and place a piece of Plywood in Bottom of the window. Cut out holes to have air come in and air exhaust. Place Louvers on the outside. Duct to outside. Turn on and check operations.

Function

The recommended Honeywell TrueFRESH Heat Recovery Ventilator is a simple unit that brings fresh air into the lobby and expels stagnant air out of the lobby at 150 CFM. It does not and currently can not filter for viruses. It's sole purpose in this application will be to create an outside air exchange in a radiantly heated lobby area, where there will be close to no outside air in winter months without any updates. The exchange of cold and hot air in the box keeps the fresh air warm, limiting the 'cold air effect' entering the space.



The EPA recommends in an office space at least 15 CFM per person per the EPA Indoor Air Quality (IAQ) practice.

<https://www.epa.gov/indoor-air-quality-iaq/how-much-ventilation-do-i-need-my-home-improve-indoor-air-quality>

NYTCI plans to have no more than 4-5 people in the lobby area at any time, socially spaced at 6ft apart. This equals a max of 75 CFM required in the space. Therefore the 150 CFM unit provides air flow at double the EPA requirement.

Extra Purchase To Filter Covid In The Lobby

In addition to the improved air volume recommendation, PDM Group suggested that they source or NYTCI purchase one or two Medify freestanding medical grade air filters for the space. Medify is the industry standard for filtering out viruses and other particles and are used in hospitals and doctors offices around the country.

Conclusion

The radiant heated lobby area at NYTCi can greatly improve its safety standard by improving fresh air flow and by adding one or more floor units which are made to capture viruses. PDM Group has made this recommendation to NYTCI as its most efficient solution to help improve our standard. They will install it, service and maintain it, remove it, store it and reinstall it in the future if needed. They will also be running maintenance checks on the bubble at the club, so it would be easy for PDM Group to also check the unit all winter.